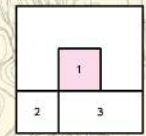


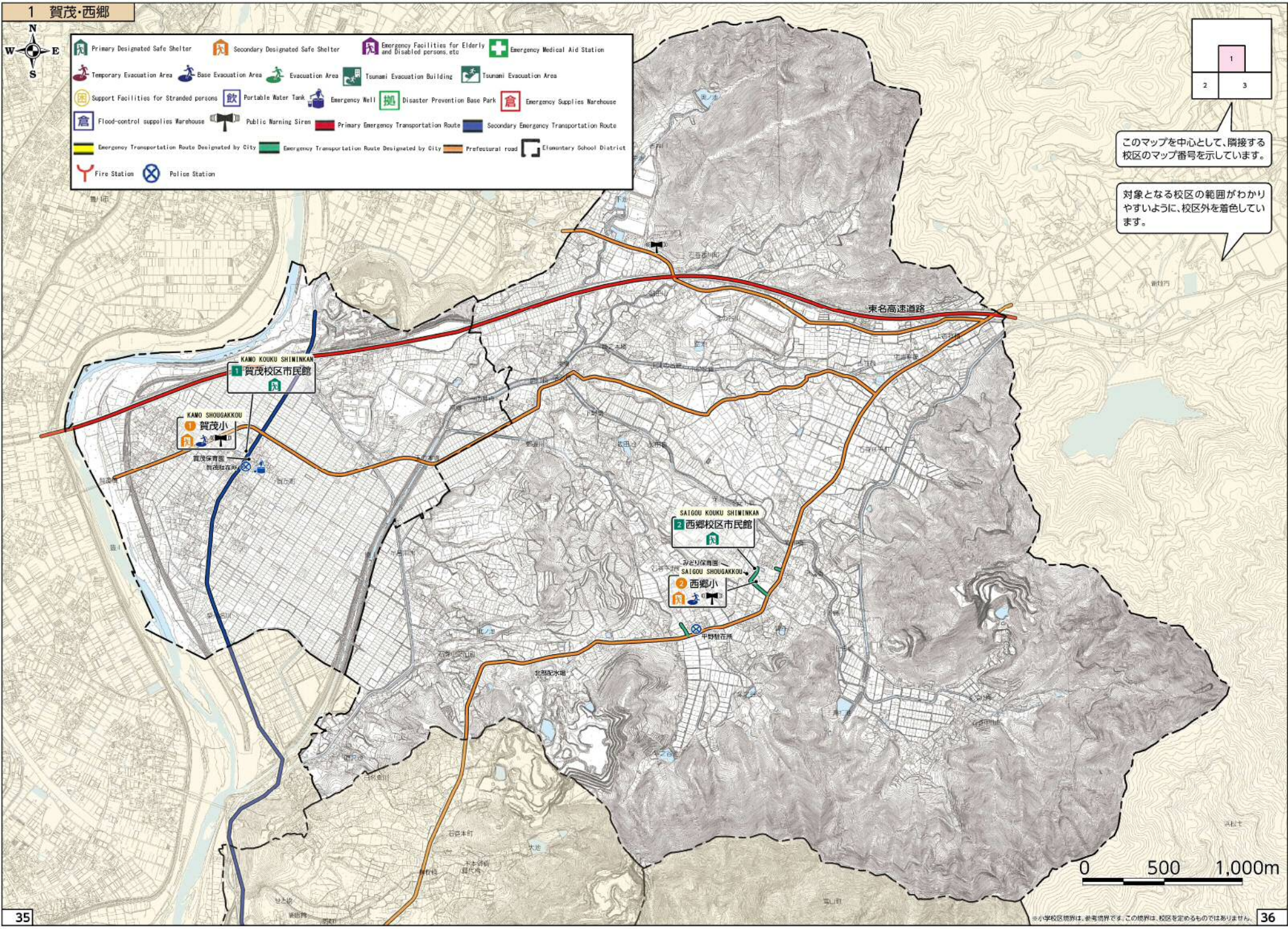


- Primary Designated Safe Shelter
- Secondary Designated Safe Shelter
- Emergency Facilities for Elderly and Disabled persons, etc
- Emergency Medical Aid Station
- Temporary Evacuation Area
- Base Evacuation Area
- Evacuation Area
- Tsunami Evacuation Building
- Tsunami Evacuation Area
- Support Facilities for Stranded persons
- Portable Water Tank
- Emergency Well
- Disaster Prevention Base Park
- Emergency Supplies Warehouse
- Flood-control supplies warehouse
- Public Warning Siren
- Primary Emergency Transportation Route
- Secondary Emergency Transportation Route
- Emergency Transportation Route Designated by City
- Emergency Transportation Route Designated by City
- Prefectural road
- Elementary School District
- Fire Station
- Police Station



このマップを中心として、隣接する校区のマップ番号を示しています。

対象となる校区の範囲がわかりやすいように、校区外を着色しています。



※小学校区境界は、参考境界です。この境界は、校区を定めるものではありません。