

4 前芝・津田

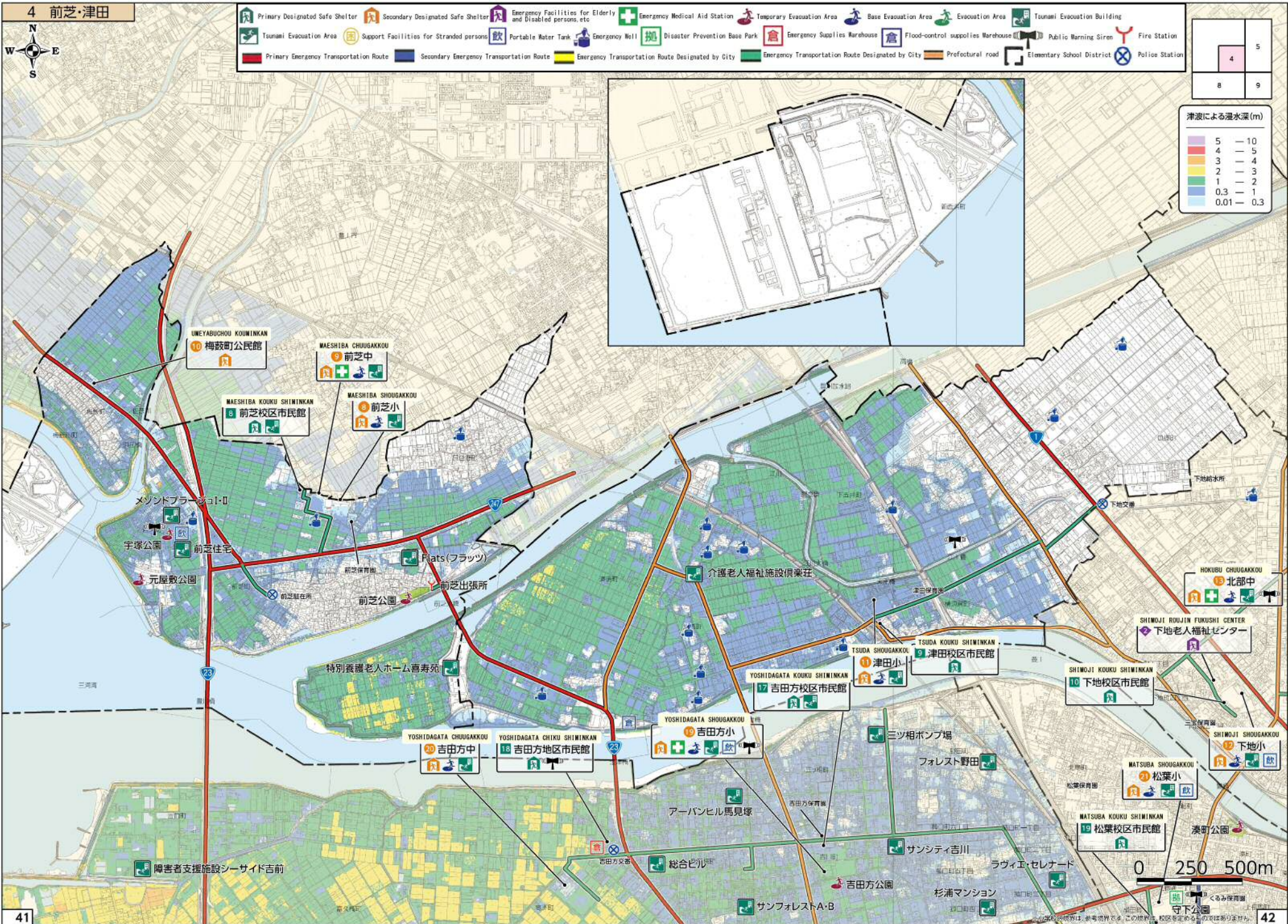
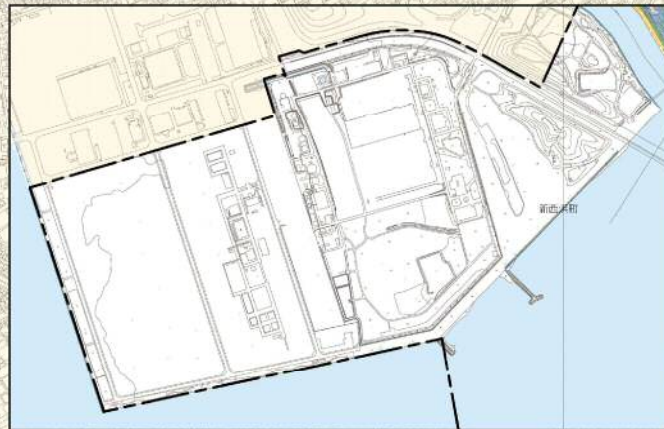


- Primary Designated Safe Shelter
- Secondary Designated Safe Shelter
- Emergency Facilities for Elderly and Disabled persons, etc.
- Emergency Medical Aid Station
- Temporary Evacuation Area
- Base Evacuation Area
- Evacuation Area
- Tsunami Evacuation Building
- Tsunami Evacuation Area
- Support Facilities for Stranded persons
- Portable Water Tank
- Emergency Well
- Disaster Prevention Base Park
- Emergency Supplies Warehouse
- Flood-control supplies Warehouse
- Public Warning Siren
- Fire Station
- Primary Emergency Transportation Route
- Secondary Emergency Transportation Route
- Emergency Transportation Route Designated by City
- Emergency Transportation Route Designated by City
- Prefectural road
- Elementary School District
- Police Station

	5
4	
8	9

津波による浸水深 (m)

5	— 10
4	— 5
3	— 4
2	— 3
1	— 2
0.3	— 1
0.01	— 0.3



0 250 500m